

les plafonds stratifiés et métalliques

Our techniques for manufacturing mono-block, or profiled false ceilings comply with standards regarding air-tightness and resistance to positive pressure. When making your selection you should consider accessibility, flexibility and demountability.

LAMINATED

Airtight false ceiling, with self-supporting, integral lighting. The ceiling is composed of a primary self-supporting frame, made of extruded aluminium parts, and thermo-lacquered aluminium profiles with strong persistence. The grid can be in-filled either with solid panels*, lights, terminal filters or diffusers.

The frame of the ceiling hangs on galvanised threaded M8 rods, supported every 2000 x 1200, either from the soffit or the steel structure. It can also be supported on MUPRO, HALFEN-type galvanised rails or similar, which can rest on the walls.

The ceiling system will allow access of a person with his equipment for maintenance operations. Access to ventilation equipment, replacement of filters or lighting tubes can be done from outside the room in the technical void. The perimeter connection at the edges with the walls is made using a thermo-lacquered aluminium profile with rounded groove of diameter 40mm. A 3-way angle diffuser is used to connect the vertical quarter-round profile and the two horizontal quarter-rounds.

** White matt or transparent laminated or melamine resin, these panels rest on the wings of primary frame profiles, and on the edge profiles. They can be made flush by incorporating a rebate around the perimeter of the panels.*



METAL

Airtight false ceiling made of self-supporting metal tanks, flush facings, with airtight sealing ensured using an extrusion of 7s silicone. The aluminium faces are CNC machined, in the workshop, for the filter and light apertures. Edge to edge assembling by omega.

Weight of a 52mm panel: aluminium 13 kg/m², steel 18kg/m².

Foam core, PV M1, CSTB 9132178, $\lambda = 0.028$, K in W/M² 50=0.56 80=0.35
Rockwool core, PV Mo, CSTB 9336289, $\lambda = 0.040$, K in W/m² 50=0.80 80=0.50

Aluminium 303 80/100° white lacquered 104, 25 micron polyester lacquer, brilliance 83%, anti UV.

Steel Z225 60/100° white lacquer 887, 25 micron polyester, brilliance 50%, anti UV.

Metallic tank 600x600, 600x1200, cassette on invisible rail.



ACOUSTICS

We can offer acoustic correction of ceilings by applying Ecophon panels made by the Saint-Gobain group.

In compliance with European Directives regarding the working environment, order dated 30/08/90, OJ 27/09/90 stipulating that acoustic correction must be provided for premises where workers are subjected to a noise level higher than 85 dB (A).

Attenuation of the noise level to a limit of 75db (A).



plafonds

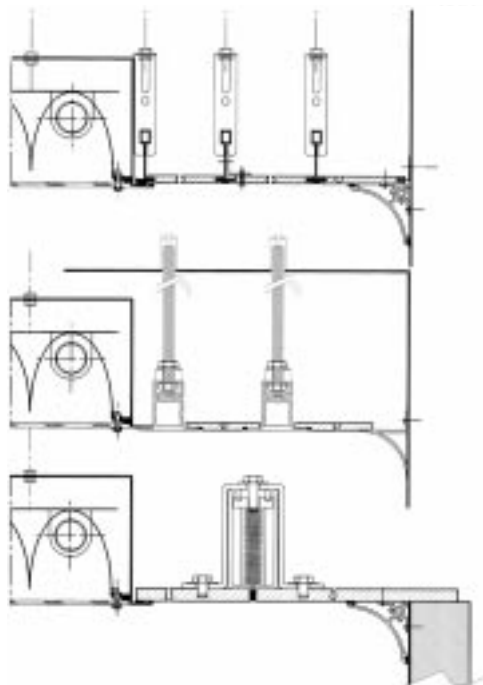
dessins techniques

ceilings - technical drawings

Melamine resin

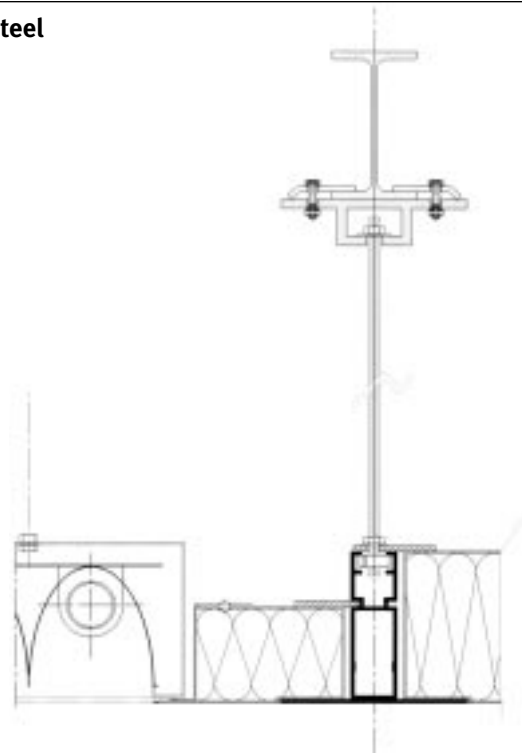


Laminated ceilings

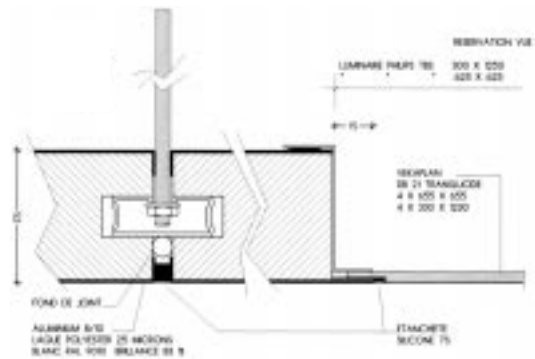


Compact

Steel



Metal ceilings



Vertical cross section, scale: 1



View from below, scale: 1

Aluminium

RN 100, 84400 Apt, France
 Tél. 33/0 4 90 04 71 41, Fax 33/0 4 90 04 74 47
 E-mail lsb-apt@avignon.pacwan.net, web <http://www.lasalleblanche.com>
 RC Avignon 326 676 681 83 B 73 - Code APE 361 G

