

# les panneaux compacts

Intégral LSB 52

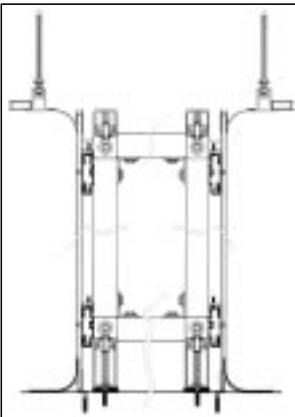
## compact panels - integral LSB 52

Integral LSB Compact is a flat panel with a base of thermo-set resins, reinforced by cellulose fibres and manufactured under high pressure, and at high temperature. The mechanical qualities of this material are incomparable, we recommend the solid laminate for complex installations where machining in the section should be totally air-tight. The use of this material requires extensive knowledge and experience, such as ours. Associated with the patent for flexible mounting, it is still the technique that is able to cope with the greatest number of constraints regarding resistance to chemical products and more particularly for renovation purposes.

- 1 or 2 side HPL facings (chlorine content 0%), suitable for pharmaceutical applications, M1 classification, water resistant, minimum thickness 6mm.
- Hollow self-supporting structure, galvanised metal, enabling the sheaths and wiring to be laid, and the boxes to be embedded.

## European patent for flexible mounting n° 96 420 433 5.

**PRESENTED IN SINGLE OR DOUBLE SKIN VERSIONS ON ENTIRELY DE-MOUNTABLE PROFILES.**



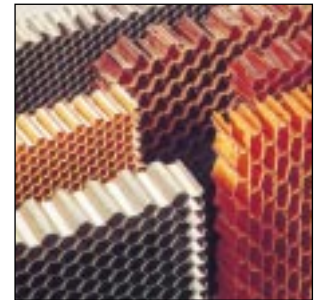
### Mounting sequence

Mounting of the structure/mounting of the panels on the structure / Producing consistent, pharmaceutical quality seals between the panels using QAP procedures / Allowance in the grooved plinths / Resin / MIPOLAN / Apertures, inserts and all passage subjections through the partitions / rounded aluminium angles (walls/ceiling) / Flush glazed facing (2 sides).

Our selection of high pressure laminates complies with the French standard NF T54/324 (homogenous materials with mechanical characteristics recognised ISO R1183,87).

In compliance with the law n° 76.663 of July 19, 1976 and decree n° 77.1133 of September 21, 1977 regarding classified installations subject to declaration.  
Contact with foodstuffs authorised PV.I.A.N.E.S.C.O.

**ALUMINIUM HONEYCOMB CORE PANELS.**



### The reasons for this choice

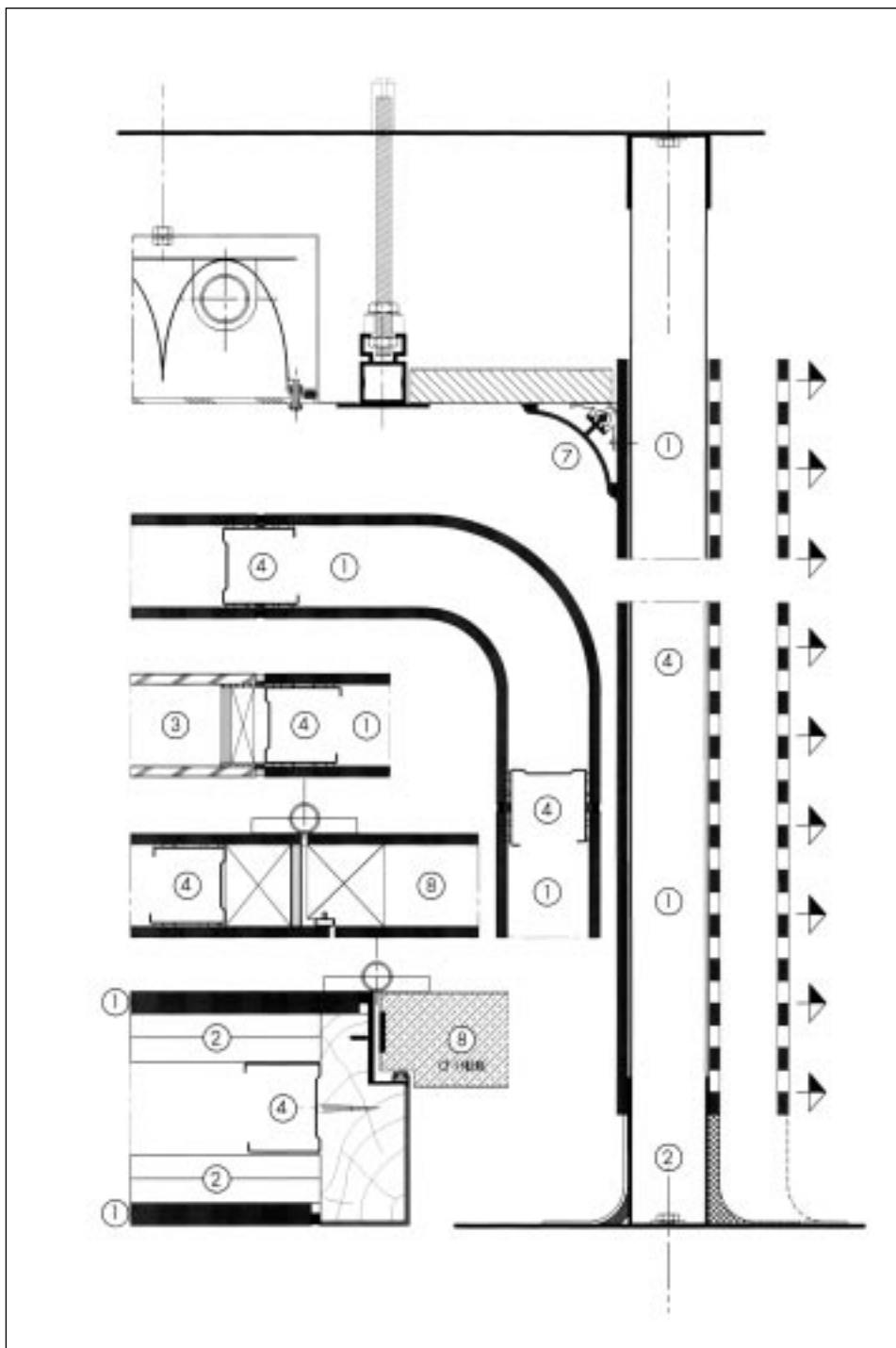
- 1 excellent resistance to chemical products
- 2 excellent impact strength, resistance to abrasion, scratching
- 3 insensitive to water
- 4 classified as anti-static
- 5 angle post-formed in the mass
- 6 exceptionally well suited to process
- 7 de-mountable
- 8 2-hour firebreak



# intégral LSB 52 cloisons creuses

dessins techniques

## integral LSB 52 hollow partitions - technical drawings



### A

#### PHYSICAL AND MECHANICAL CHARACTERISTICS

A1 - Weight 20 kg/m<sup>2</sup>  
 A2 - Quality: M2/HM1  
 A3 - Insensitive to humidity / Incubator, washing room and shower cabin, etc.

### B

#### PERFORMANCE

B1 - Thermal conductivity: +/- 0.3 W/mk (DIN 5612)  
 B2 - Sound Conductivity: 31 dB (A) acoustic attenuation (CSTB n° 3931)  
 B3 - Anti-static classification 1010W2

### C

#### FIRE CLASSIFICATION

C1 - Classification M1/F1 Firebreak / Flame protection 2 hours on STUCAL MO (CTSB 85.22545)  
 C2 - Possibility of doubling freight lift / elevator / technical sheath 2 hour FC

### D

#### RÉSISTANCE:

#### HPL COATING

D1 - to scratching  
 EN 438 ≥ 2N  
 D2 - To abrasion  
 EN 438 ≥ 600 rpm  
 D3 - to impact  
 EN 438 ≤ 7mm / height 1m  
 D4 - to steam  
 EN 438 ≥ 8% / 2 hours / 100°  
 D5 - Superficial heat  
 EN 438 ≥ without damage 180° cooled 200 mm  
 D6 - to boiling water  
 EN 438 ≤ 8% / 2 hours / 100°

- |                   |                                |
|-------------------|--------------------------------|
| ① LAMINATED PANEL | ⑤ DE-MOUNTABLE PANEL           |
| ② ALUMINIUM SOLE  | ⑥ MIRROR PANEL                 |
| ③ GLAZING         | ⑦ CONNECTING ALUMINIUM PROFILE |
| ④ CONNECTING KEY  | ⑧ DOOR FRAME                   |

Resistance to chemical products on request.

RN 100, 84400 Apt, France  
 Tél. 33/0 4 90 04 71 41, Fax 33/0 4 90 04 74 47  
 E-mail [lsb-apt@avignon.pacwan.net](mailto:lsb-apt@avignon.pacwan.net), web <http://www.lasalleblanche.com>  
 RC Avignon 326 676 681 83 B 73 - Code APE 361 G

