

les vitrages

sur cloisons, portes et issues de secours

glazing - for partitions, doors and emergency exits

Our glazing systems can be combined, and provide a flush-finished solution for site requirements. We work with our glass-manufacturing partners to study special products representing a technical solution in terms of safety.

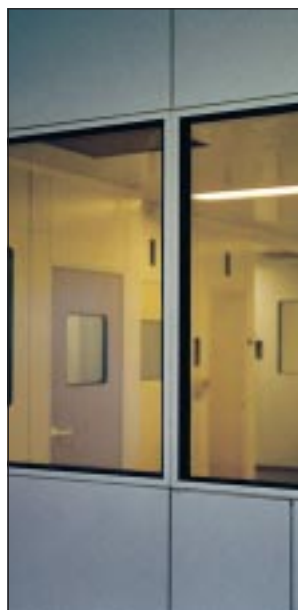


Coved corners Double flush glazing

Mono-block panel, machining and installation perfectly flush.
Fast installation on the site.
Standard panel 1200.
Glazing 900 x 900.
D angle = 37 mm.

Options: compound, Securit, made-to-measure.

Pasteur Mérieux Connaught, Marcy l'Etoile / Val de Reuil.



Corners Double flush glazing

Glass panel made of a profiled aluminium frame with white RAL 9010 thermo-lacquering with strong persistence, on either side of which is glued a glass sheet.
Standard glazing 1200 x 1000.
All dimensions can be provided with this system.
Continuous mounting

Options: compound, Securit, Dravel.

Pasteur Mérieux Connaught, Marcy l'Etoile / Val de Reuil.



Emergency exits

1 side flush.
Securit unit.
White markings.
Red hammer.

Variant: 2 sides flush.

Rhône Poulenc Rorer, Fisons Laboratories.



Vision panel

Flush on both sides.
Standard 450 x 450.
D angle: 37mm.

Options: compound, Dravel, Securit.

Rhône Poulenc Rorer, Fisons Laboratories.

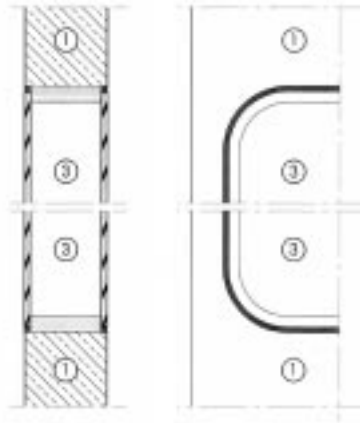
Panels delivered ready to install.
Flush installed glazing.
Silicone seals in place.



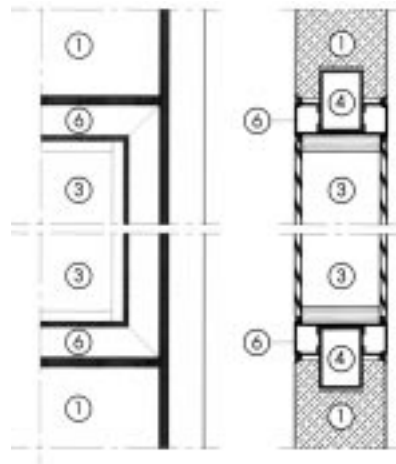
les dessins techniques

vitrages

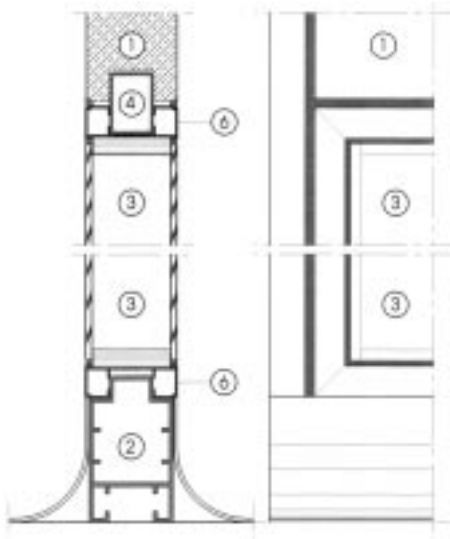
technical drawings - glazing



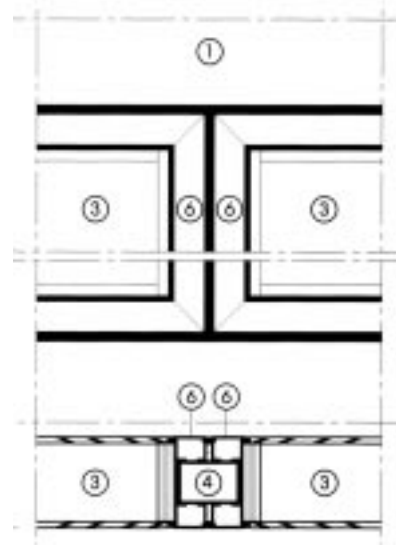
Coved corners



Corners



Flush emergency ceilings



Continuous glazing

- ① LAMINATED PANEL
- ② ALUMINIUM SOLE
- ③ GLAZING

- ④ CONNECTING KEY
- ⑤ MIRROR PROFILE

Partitions of all heights,
flush on both sides,
made to measure.

RN 100, 84400 Apt, France
Tél. 33/0 4 90 04 71 41, Fax 33/0 4 90 04 74 47
E-mail lsb-apt@avignon.pacwan.net, web <http://www.lasalleblanche.com>
RC Avignon 326 676 681 83 B 73 - Code APE 361 G



9'

LSB®