

les panneaux creux stratifiés HPL

EON 52®

HPL hollow panels - EON 52®

To satisfy the needs of users in terms of electrical flexibility, we produce the EON 52, panel with hollow structure, so that wires can be passed in each of its connection tubes.

The hollow EON 52 panel HPL plated on 2 sides 10/10th in compliance with the French standard NF T 54 324 is supported by a profile with a recess for flush mounting of PVC and resin floor coverings. Its tubular body enables wiring to be easily fitted, and electrical function boxes to be embedded, with a good degree of flexibility. Its vertical mounting is ensured by PVC profiles or tongues, and the air tightness between panels is ensured with a neutral silicone extrusion, installed using QAP procedures. Accessories in RAL 9010 aluminium profiles, 3 output diffuser, angle fillets, de-mountable panels, vision panel frame, flush glazing / emergency exit / vision panel. Standard dimensions: width 600 / 1200, height 2500 / 2700 / 3000.

Composite laminated panels classified M1 PV CSTB.

- Enclosed, non-porous structure to prevent the adherence of dust and dirt, and gives easy maintenance
- Very high resistance to ISO 4586 standard shocks, and to scratches and abrasion
- Easy to clean with traditional products, its good resistance to chemical products (see characteristics in appendix) means that aggressive disinfectant can be used if necessary
- Classified as an anti-static material in compliance with standard DIN 51 953, DIN 53 482. This property makes it particularly well suited for use in clean rooms / for computer furniture / optical applications
- Transparent to X-rays, making it easier to use for medical applications
- Special types of contamination (inert), microbiological (living), depend on the non-emission of particles and suitability for cleaning processes. Cleaning procedure: flat surface without protruding parts (no seal covers)
- Integration of technical functions: flush mounting of electrical equipment, P.C., intercom / telephone, emergency unit; flush mounting of glass panes / flooring / door frames, Integrated catches, rebates, electrical bolts
- Resistance to fire: M1
- Resistance to humidity: not subject to moulding or rotting

In compliance with the law n° 76.663 of July 19, 1976
and decree n° 77.1133 of September 21, 1977
regarding classified installations subject to declaration.
Contact with foodstuffs authorised P.V.I.A.N.E.S.C.O.

The reasons for this choice

- 1 wiring easily fitted
- 2 excellent value for money
- 3 highly resistant surface coating
- 4 offers the best facility for surface decontamination
- 5 all patented accessories can be flush mounted
- 6 very efficient acoustic attenuation
- 7 can be used to support a secondary structure
- 8 offers heat and electrical insulation
- 9 pre-fitted before delivery and electrically pre-wired
- 10 attractive appearance, offering exceptionally high-quality finish
- 11 attractive appearance, offering exceptionally high-quality finish

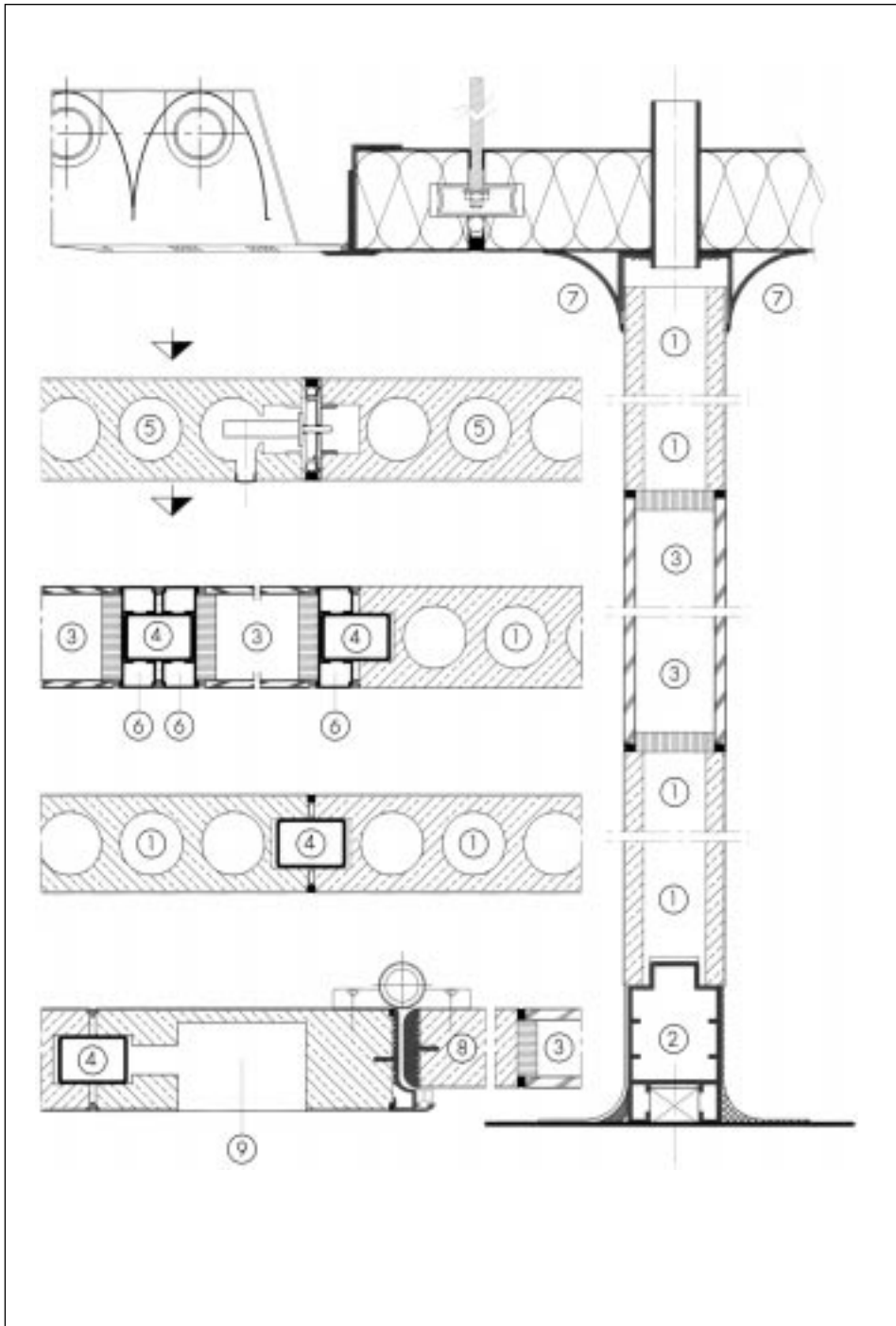
Our selection of high pressure laminates complies with the French standard NF T54/324 (homogenous materials with mechanical characteristics recognised ISO R1183.87).



EON 52®

dessins techniques

EON 52® - technical drawings



- ① LAMINATED PANEL
- ② ALUMINIUM SOLE
- ③ GLAZING
- ④ CONNECTING KEY
- ⑤ DE-MOUNTABLE PANEL

- ⑥ MIRROR PANEL
- ⑦ CONNECTING ALUMINIUM PROFILE
- ⑧ DOOR FRAME
- ⑨ ELECTRICAL PROVISIONS

A

PHYSICAL AND MECHANICAL CHARACTERISTICS

- A1 - Weight 21 kg/m²
- A2 - Support partition 1000 kg
- A3 - Standard quality / M1
- A4 - Standard dimensions
l 1200, h 2500/2750/3000
- A5 - Tube diameter 38mm
Centre distance 415 mm
(i.e. 218 tubes for a 1200 panel)

B

PERFORMANCE

- B1 - Heat insulation
0.22/2°CW
- B2 - Sound insulation 58
dB (A) acoustic attenuation

C

FIRE CLASSIFICATION

- C1 - M3 Classification
Firebreak / Flame
protection 3/4 hour
(CTSB 87.25867)
NOVOBLOC partition 50mm
de-mountable installation.
- C2 - M3 classification
firebreak / flame protection
1 hour (CTSB 87.26063)
NOVOBLOC partition 50mm
fixed installation false
tongue M1
- C3 - M1 classification
firebreak / flame protection
1 hour 30 min
(CSTB 87.25866)
NOVOBLOC partition M1
safety composite 30 mm
mineral wool, thickness
100 mm

D

RÉSISTANCE:

HTPL COATING

- D1 - to scratching
EN 438 ≥ 2N
- D2 - To abrasion
EN 438 ≥ 600 rpm
- D3 - to impact
EN 438 ≤ 7mm/ height 1m
- D4 - to steam
EN 438 ≥ 4
- D5 - Superficial heat
EN 438 ≥ without damage
180° cooled 20 min
- D6 - to boiling water
EN 438 ≤ 8% / 2 hours / 100°

RN 100, 84400 Apt, France

Tél. 33/0 4 90 04 71 41, Fax 33/0 4 90 04 74 47

E-mail lsb-apt@avignon.pacwan.net, web <http://www.lasalleblanche.com>

RC Avignon 326 676 681 83 B 73 - Code APE 361 G



6'

LSB®