

les panneaux stratifiés HPL

cloisons LSB 52 mm

HPL panels - LSB partitions 52mm

Since 1972, our customers, their insurance companies, design offices and architects have recognised the advantages of HPL in terms of its ageing qualities. We have built 720,000 m2 of LSB 52 partitions, including 570,000 m2 for Duffay S.A.

Composite LSB, panel, 52mm thick and faced both sides with HPL are in compliance with standard NF T54 324. Module sizes -900/1200. Standard colour RAL 9010. Supported on an aluminium 70 mm floor track with a recess to achieve a flush coving detail to the PVC/resin flooring. Electrical services are flush mounted. Vertical assembly hollow section, and the air tightness between panels is assured by sealing with silicone 7s, installed using QAP procedures. Profiled aluminium accessories are finished to RAL 9010, angle fillets, de-mountable panels, door frames, finishing profiles, fixed seals extruded silicon or ppdm profiles. Flush glazing, emergency exit, vision panel.

Pre-fitted and electrically pre-wired before delivery (CNC Machined).

- Enclosed, non-porous structure to avoid adherence of dust and dirt, for easy maintenance
- Very high resistance to ISO 4586 standard shocks, and to scratches and abrasion
- Easy to clean with traditional products, its good resistance to chemical products (see characteristics in appendix) means that aggressive disinfectant can be used if necessary.
- Classified as an anti-static material in compliance with standard DIN 51 953, DIN 53 482. This property makes it particularly well suited for use in clean rooms for computer furniture or optical applications
- Transparent to X-rays, making it easier to use for medical applications
- Special types of contamination (inert), microbiological (living), depend on the non-emission of particles and coherence with cleaning processes. Cleaning procedure: flat surface without protruding parts (no seal covers)
- Integration of technical functions: flush mounting of electrical equipment, P.C., intercom/telephone, emergency unit; flush mounting of glazing / flooring / door frames, integrated catches, rebates, electrical bolts
- Resistance to fire: M1
- Resistance to humidity: not subject to moulding or rotting

In compliance with the law n° 76.663 of July 19, 1976
and decree n° 77.1133 of September 21, 1977
regarding classified installations subject to declaration.
Contact with foodstuffs authorised PV.I.A.N.E.S.C.O.



The reasons for this choice

- 1 excellent value for money
- 2 complies with the constraints of process, offering very good flexibility
- 3 highly resistant surface coating
- 4 very good resistance to impact (due to its solid core construction)
- 5 easy surface decontamination
- 6 comes in a wide range of colours
- 7 all patented accessories can be flush mounted
- 8 very efficient acoustic attenuation
- 9 can be used to support a secondary structure
- 10 fire resistant for 1h 30min
- 11 offers heat and electrical insulation
- 12 rot proof, classified water-resistant
- 13 bacteriostatic
- 14 assembled before delivery and electrically pre-wired
- 15 Attractive appearance, offering exceptionally high-quality finish

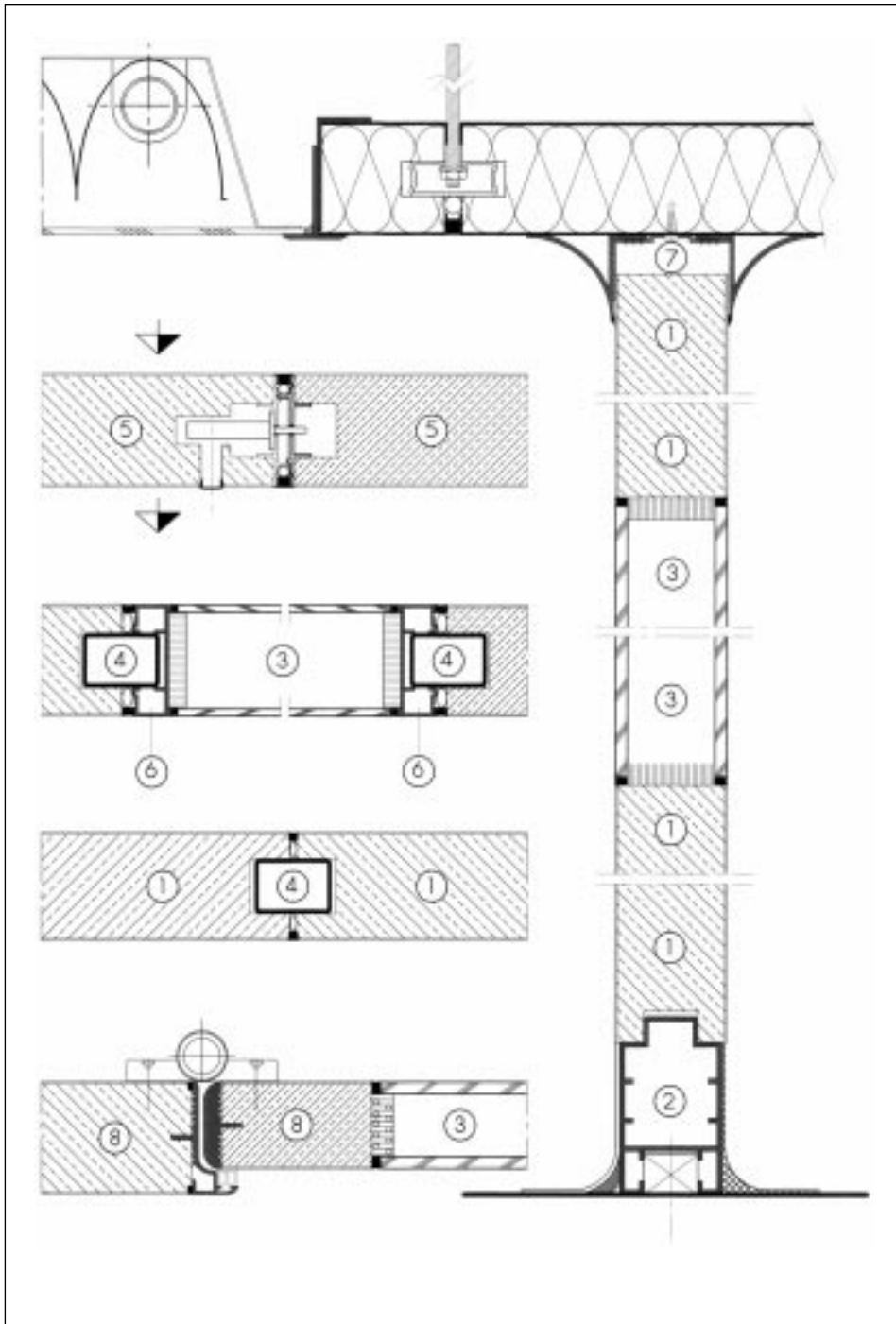
Our selection of high pressure laminates complies with the French standard NF T54/324 (homogenous materials with mechanical characteristics recognised ISO R1183.87).



les cloisons LSB 52 mm

dessins techniques

LSB 52 mm partitions - technical drawings



- | | |
|-------------------|--------------------------------|
| ① LAMINATED PANEL | ⑤ DE-MOUNTABLE PANEL |
| ② ALUMINIUM SOLE | ⑥ MIRROR PANEL |
| ③ GLAZING | ⑦ CONNECTING ALUMINIUM PROFILE |
| ④ CONNECTING KEY | ⑧ DOOR FRAME |

A

PHYSICAL AND MECHANICAL CHARACTERISTICS

A1 - Weight 27 kg/m²
 A2 - Support partition 1500 kg / breaking load 8000 kg (CEDTP n° 512 8 746)
 A3 - Standard quality / CTB-H / M1 safety / CTB-H M1 safety

B

PERFORMANCE

B1 - Heat insulation 0.35/2°CW
 B2 - Sound insulation 31 dB (A) acoustic attenuation (CSTB n° 3931)

C

FIRE CLASSIFICATION

C1 - M3 Classification Firebreak / Flame protection 3/4 hour (CSTB 87.25867) NOVOBLOC partition 50 mm de-mountable installation
 C2 - M3 classification firebreak / flame protection 1 hour (CSTB 87.26063) NOVOBLOC partition 50mm fixed installation false tongue M1
 C3 - M1 classification firebreak / flame protection 1 hour 30 min (CSTB 87.25866) NOVOBLOC partition M1 safety composite 30 mm mineral wool, thickness 100 mm

D

RESISTANCE: HPL COATING

D1 - to scratching EN 438 ≥ 2N
 D2 - To abrasion EN 438 ≥ 600 rpm
 D3 - to impact EN 438 ≤ 7mm/ height 1m
 D4 - to steam EN 438 ≥ 4
 D5 - Superficial heat EN 438 ≥ without damage 180° cooled 20 mm
 D6 - to boiling water EN 438 ≤ 8% / 2 hours / 100°

RN 100, 84400 Apt, France
 Tél. 33/0 4 90 04 71 41, Fax 33/0 4 90 04 74 47
 E-mail lsb-apt@avignon.pacwan.net, web <http://www.lasalleblanche.com>
 RC Avignon 326 676 681 83 B 73 - Code APE 361 G



5'

LSB®