

les panneaux métalliques

Acier & Aluminium

metal panels - Steel and Aluminium

Self-supporting panels with recognised insulating, thermal and acoustic properties, used for the construction of cold chambers and incubators. They are compatible and complementary with the range of elements, components and accessories of the constructive system proposed by LSB.

Wall thickness 52 mm, unless reinforced thermal insulation or span has been requested, requiring special adaptation. Installed on recessed aluminium floor track for flush PVC and resin floor surfaces, assembly between panels by tubular key, air-tightness between panels is achieved using a silicone seam. Ceiling thickness 82 mm to ensure improved load descent.

Sandwich panel including insulating coating on the two sides of a facing sheet.

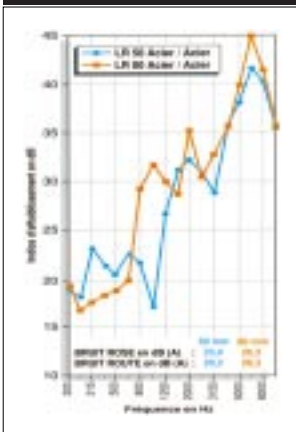
STEEL FACING

Composite panels
6/10° steel, 25 micron white polyester lacquer, 50% brilliance

• INSULATING CORE (Mo classification)

- Mineral wool density 165 kg/m³
- Lambda 0.040
- PV CSTB 93 36289

Acoustic attenuation (in dB) of mineral wool panels



• HONEYCOMB CORE (Mo classification)

- Aluminium honeycomb
D = 12mm
- Folded edges
- Aluminium profile female frame

Our equipment complies with the requirements of GMP/BPF.



ALUMINIUM FACING

Composite panels
Steel 6/10°, 25 micron white 9010 polyester lacquer, 50% brilliance

• M1 INSULATING CORE

- Styrofoam density 30 kg/m³
- Lambda 0.028
- PV CSTB 91 32178

• M1 POLYSTYRENE CORE

- Polystyrene density 21kg/m³
- Lambda 0.035
- PV CSTB 84 21134

• M1 POLYURETHANE CORE

- Polyurethane density 38 kg/m³

The reasons for this choice

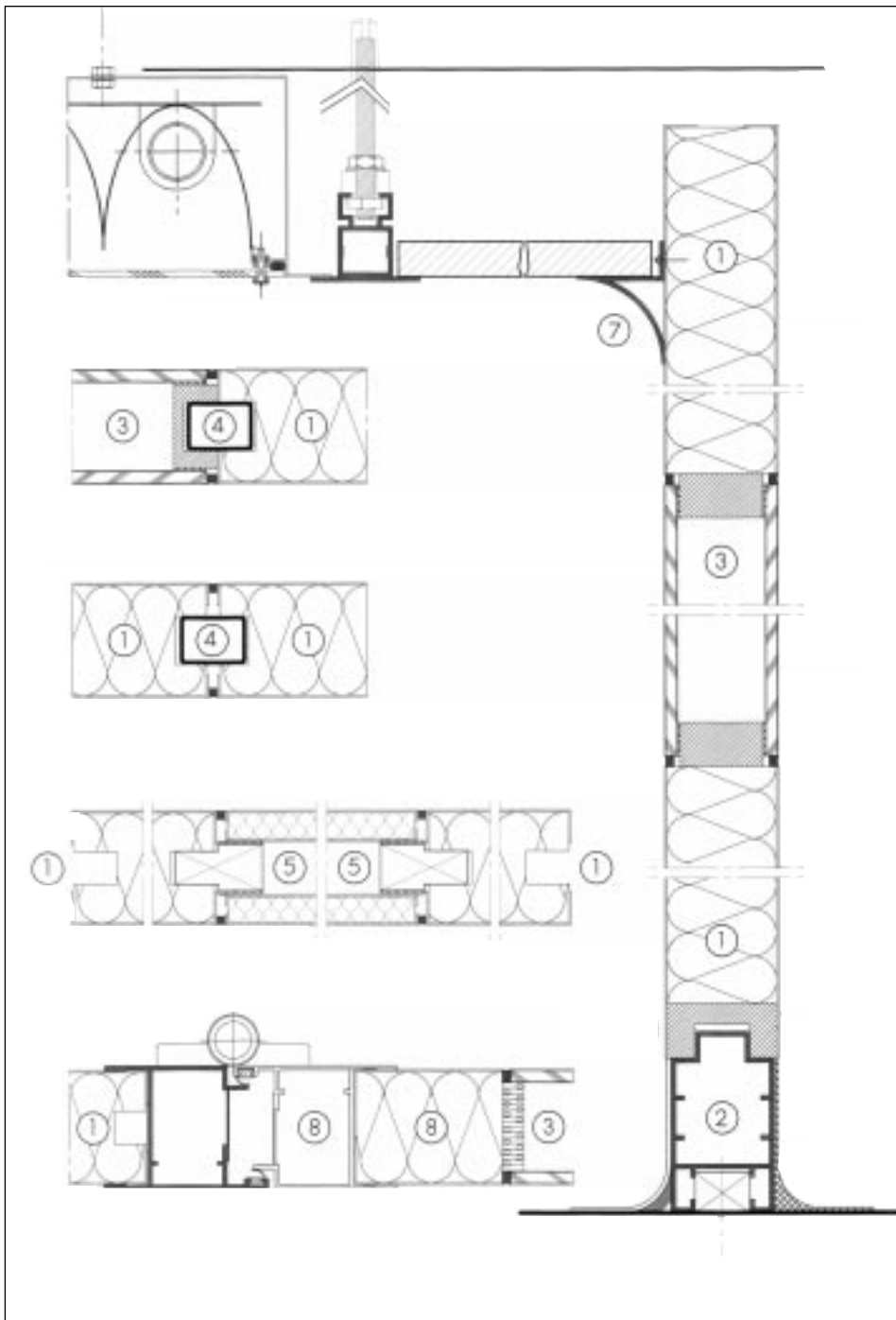
- 1 thermal insulation
- 2 sound insulation
- 3 lengths up to 9 meters
- 4 aluminium honeycomb core (microelectronic)



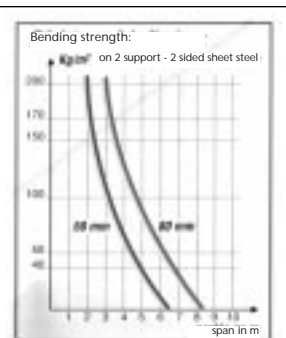
panneaux métalliques

dessins techniques

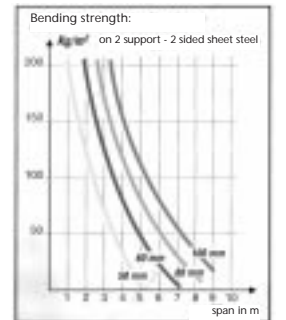
metal panels - technical drawings



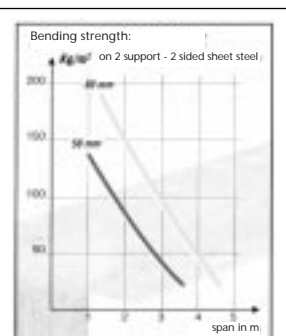
- | | |
|-------------------|--------------------------------|
| ① LAMINATED PANEL | ⑤ DE-MOUNTABLE PANEL |
| ② ALUMINIUM SOLE | ⑦ CONNECTING ALUMINIUM PROFILE |
| ③ GLAZING | ⑧ DOOR FRAME |
| ④ CONNECTING KEY | |



Expanded polystyrene



Extruded polystyrene



Rockwool

RN 100, 84400 Apt, France
 Tél. 33/0 4 90 04 71 41, Fax 33/0 4 90 04 74 47
 E-mail lsb-apt@avignon.pacwan.net, web <http://www.lasalleblanche.com>
 RC Avignon 326 676 681 83 B 73 - Code APE 361 G



8'

LSB®