

les SAS de transfert matériels

stratifié HPL

equipment pass boxes - HPL

Our pass boxes are used to move materials and equipment between rooms of different classification without compromising the room integrity. They must be correctly sized to enable unimpeded transfer of the equipment, and sufficiently airtight to maintain pressurisation within the controlled atmosphere room.

A DOUBLE DOOR LOCK

WHITE LAMINATED UNIT

- Aluminium RAL9010 frame profile
- Tubular silicone seal
- White polyamide hardware
- 2 flush glass doors with vision panels

standard dimensions inside	Réf.
• 400 x 400 x 400	20001
• 600 x 600 x 600	20002
• 800 x 800 x 800	20003

B DOUBLE DOOR LOCK WITH SECURITY DEVICE TO ALLOW ONLY DOOR TO OPEN AT A TIME

INTERLOCKING WITH 2 EFF 37 RR 12 V CATCHES

interlocked, making it impossible to open the two doors simultaneously.

standard dimensions inside	Réf.
• 400 x 400 x 400	20004
• 600 x 600 x 600	20005
• 800 x 800 x 800	20006

OPTIONS

- Red opening control indicator lamp
- Ventilation including connection fitting
- Stainless steel retention tank
- Stainless steel retention counter tank
- Ultraviolet lamp
- Sealed power socket IP447 10/16A
- White epoxy steel support frame / adjustment jack / fixing rack
- DC Power supply 2 doors 24V 2a

SPECIAL TYPES OF PASS BOX

- Explo-proof
- Laminar flow
- Inflatable seal

Our equipment complies with the requirements of GMP/BPF.



CHEMICAL RESISTANCE

- Made-to-measure
- PVC
 - Corian
 - Polypropylene

The reasons for this choice

- 1 element delivered pre-wired
- 2 homogenous and compact
- 3 easy to fit
- 4 made-to-measure
- 5 flush unit

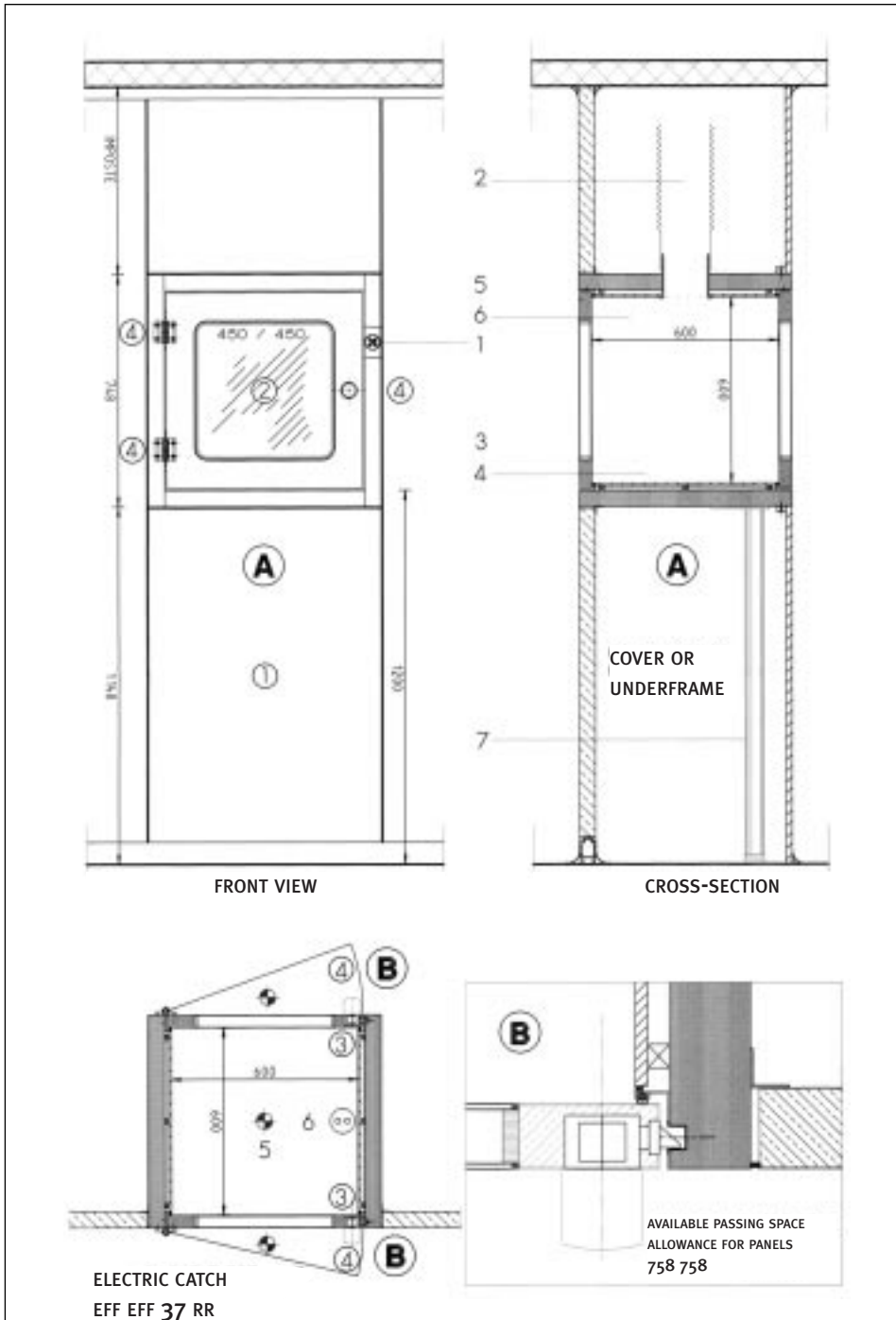
Our selection of high pressure laminates complies with the French standard NF T54/324 (homogenous materials with mechanical characteristics recognised ISO R1183,87).



SAS de transfert matériels

dessins techniques

equipment pass boxes - technical drawings



A

Double door pass box

B

Double door pass box with security device to avoid doors opening simultaneously

OPTIONS

- Red opening control indicator lamp
- Ventilation including connection fitting
- Stainless steel retention tank
- Stainless steel retention counter tank
- Ultraviolet lamp
- Sealed power socket IP447 10/16A
- White epoxy steel under-frame / adjustment jack / fixing rack
- DC Power supply 2 doors 24V 2a

SPECIAL TYPES OF PASS BOX

- Explosion-proof
- Laminar flow
- Inflatable seal

CHEMICAL RESISTANT

Made-to-measure

- PVC
- Corian
- Polypropylène

- ① LAMINATED PANEL
- ② FLUSH VISION PANEL
- ③ ALUMINIUM PROFILE
- ④ POLYAMIDE HARDWARE

RN 100, 84400 Apt, France

Tél. 33/0 4 90 04 71 41, Fax 33/0 4 90 04 74 47

E-mail lsb-apt@avignon.pacwan.net, web <http://www.lasalleblanche.com>

RC Avignon 326 676 681 83 B 73 - Code APE 361 G



2'

LSB®